

SCHEDULE A
SAMPLE TITLE

SUBDIVISION NAME
A SUBDIVISION IN SHARON, MASS.

SHEET TITLE ^[1]
DATE SCALE
OWNER NAME
ADDRESS
PREPARED BY
NAME ^[2]
ADDRESS

[1] KEY PLAN
LOT LAYOUT
PLAN & PROFILE
(Street name & stations)

[2] CIVIL ENGINEER & LAND SURVEYOR
OR COMPANY

SCHEDULE B
SAMPLE NOTES

PLANNING BOARD APPROVAL UNDER THE SUBDIVISION
CONTROL LAW NOT REQUIRED

DATE:

SHARON PLANNING BOARD

DATE APPROVED:

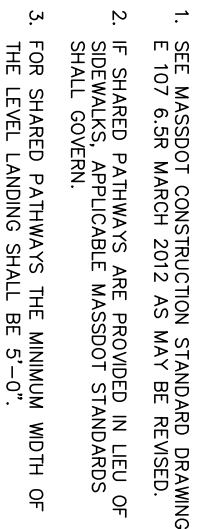
SHARON PLANNING BOARD

I CERTIFY THAT 20 DAYS HAVE ELAPSED SINCE PLANNING
BOARD APPROVAL AND THAT NO APPEAL HAS BEEN FILED
IN THIS OFFICE.

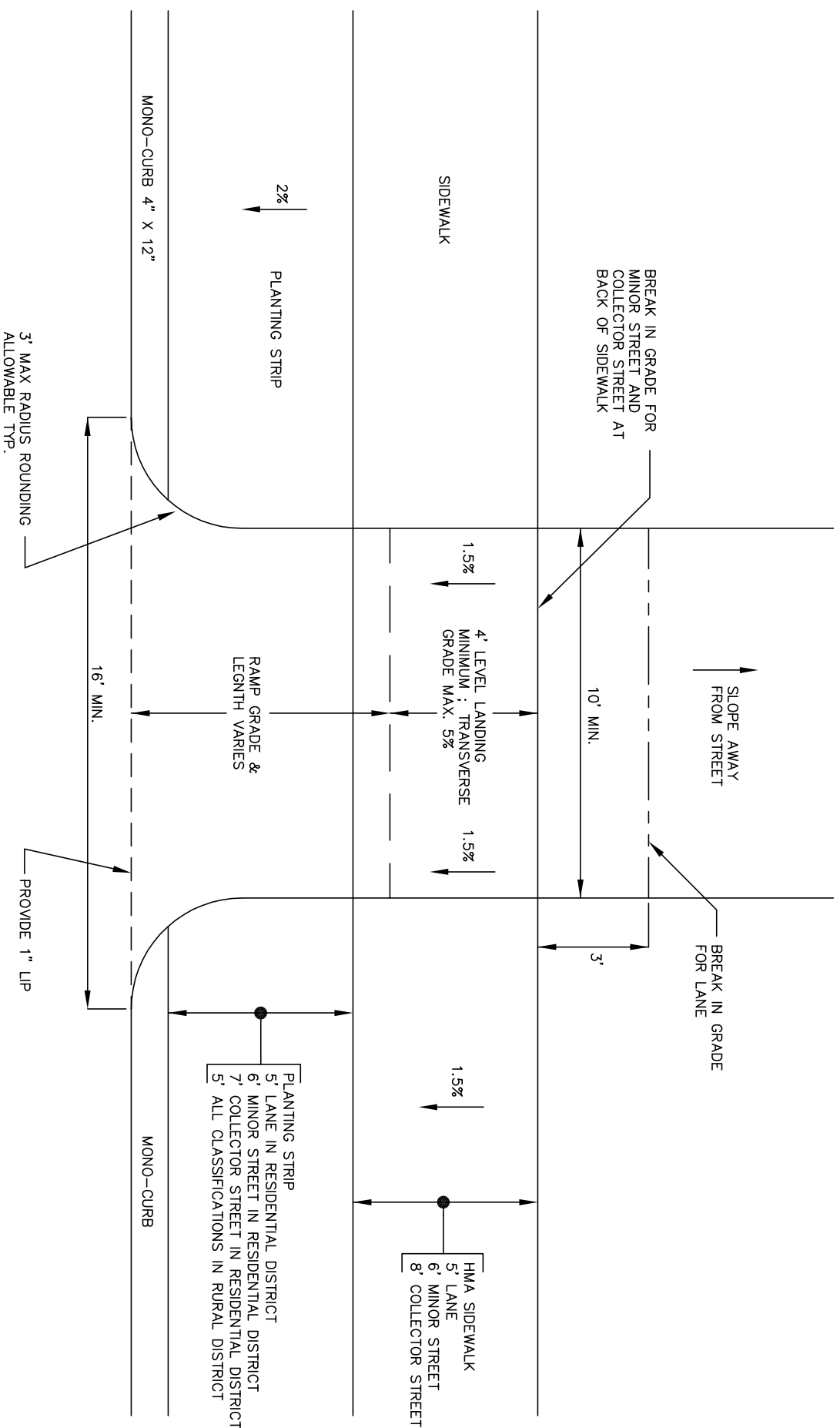
SHARON TOWN CLERK

DATE:

SHARON BOARD OF HEALTH



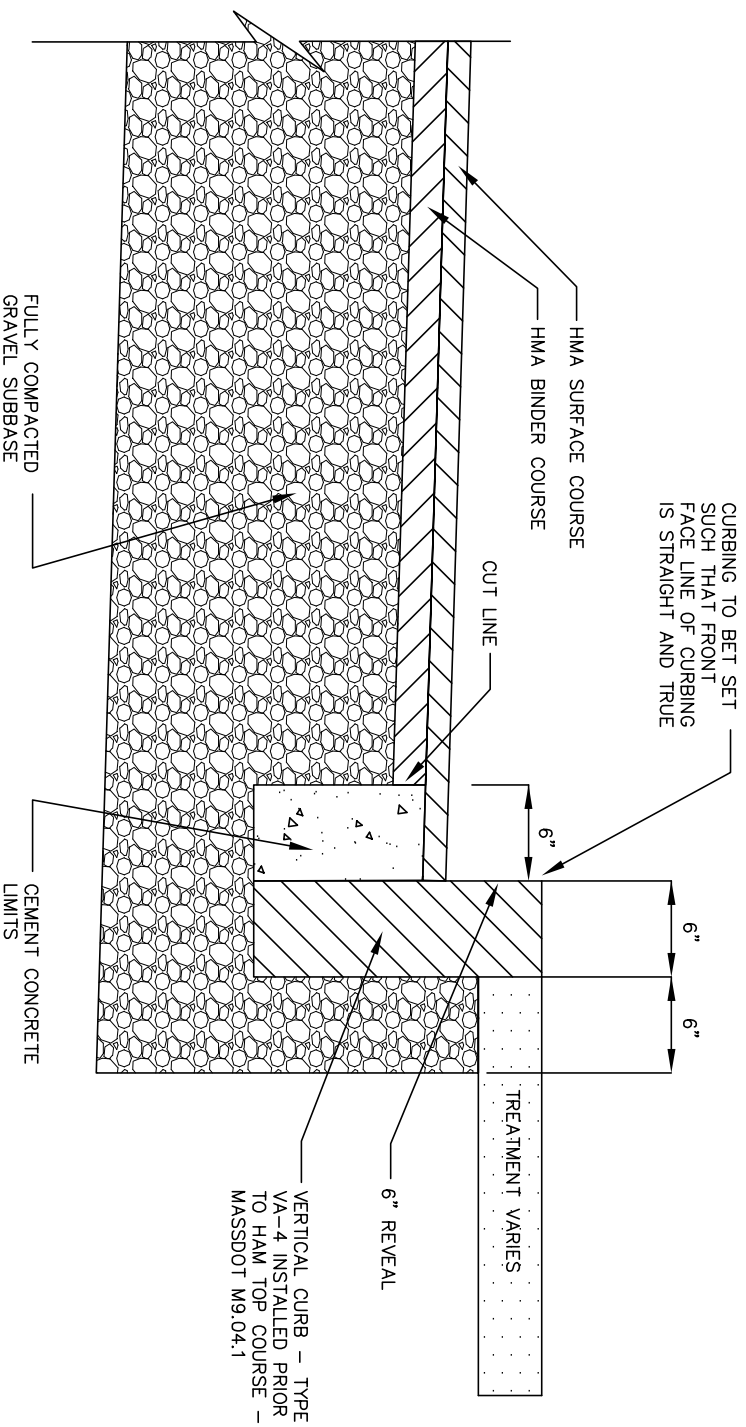
<p><i>Town of Sharon</i> <i>Department of Public Works</i></p>	DWN BY: JBR
	APPD BY: TCH
<p>SCHEDULE C WHEELCHAIR RAMP FOR SIDEWALKS WITH A PLANTING STRIP</p>	<p>DATE: MARCH 2014</p> <p>DWG NO. WCR-1</p>



NOTE:

1. GRADE AT BACK OF SIDEWALK AT DRIVEWAYS SHALL BE 6 INCHES HIGHER THAN GUTTER

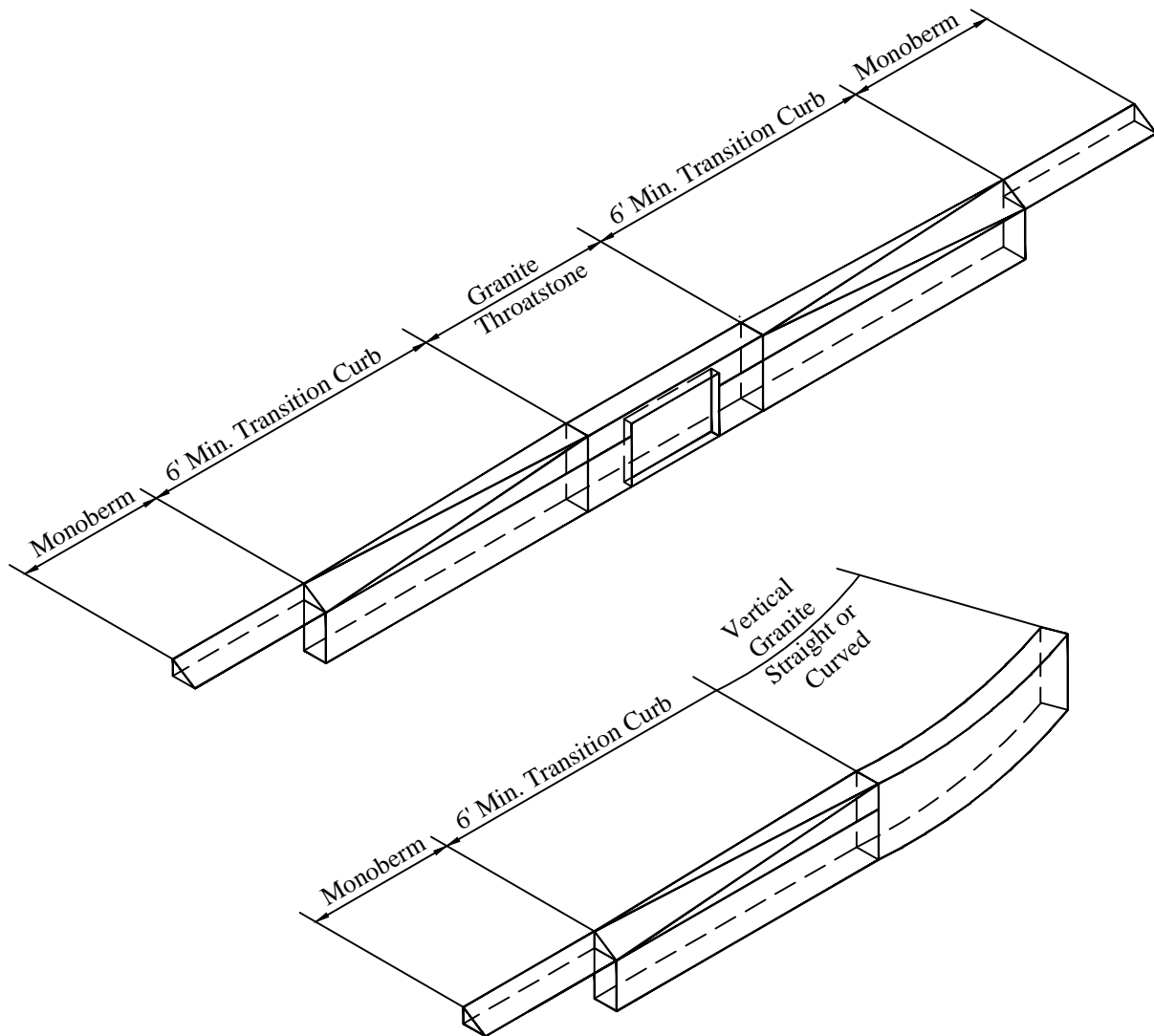
<p><i>Town of Sharon</i> <i>Department of Public Works</i></p>		DWN BY: JBR
<p>SCHEDULE D RESIDENTIAL DRIVEWAY</p>		APPD BY: TCH
		DATE: MARCH 2014
		DWG NO. CC-1

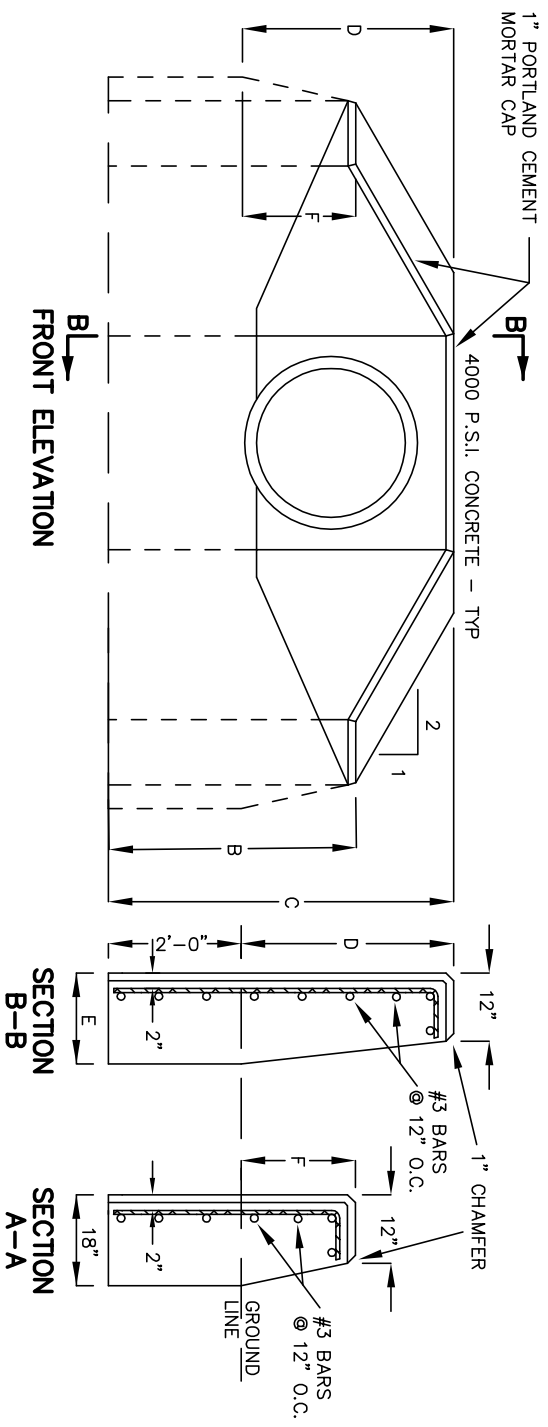


NOTE:
CUT NEAT LINE 6" FROM CURBLINE AND REMOVE BASE GRAVEL.
REPLACE WITH CEMENT CONCRETE. HOT MIX ASPHALT SHALL
NOT BE USED AS A SUBSTITUTE.

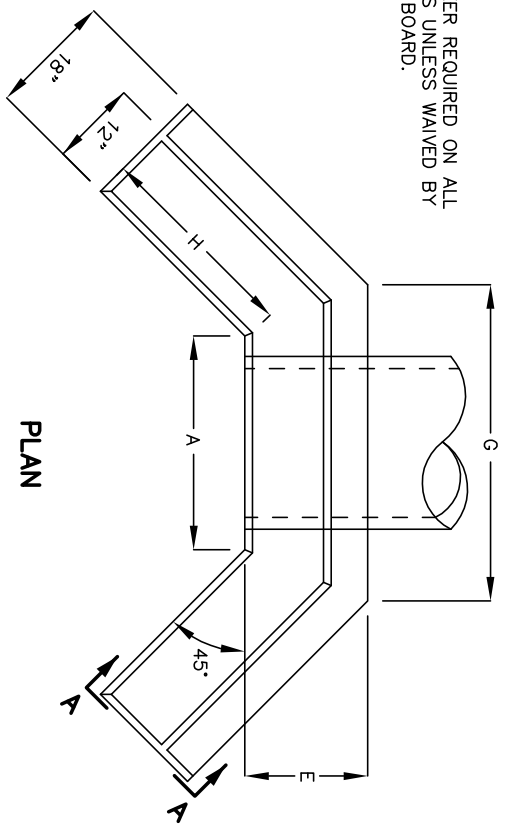
<p><i>Town of Sharon</i> <i>Department of Public Works</i></p>		DWN BY: JBR
<p>SCHEDULE E VERTICAL GRANITE CURBING</p>		APPD BY: TCH
		DATE: MARCH 2014
		DWG NO. VG-1

SCHEDULE F GRANITE TRANSITION CURB





NOTE:
 MASONRY VENEER REQUIRED ON ALL
 EXPOSED FACES UNLESS WAIVED BY
 THE PLANNING BOARD.



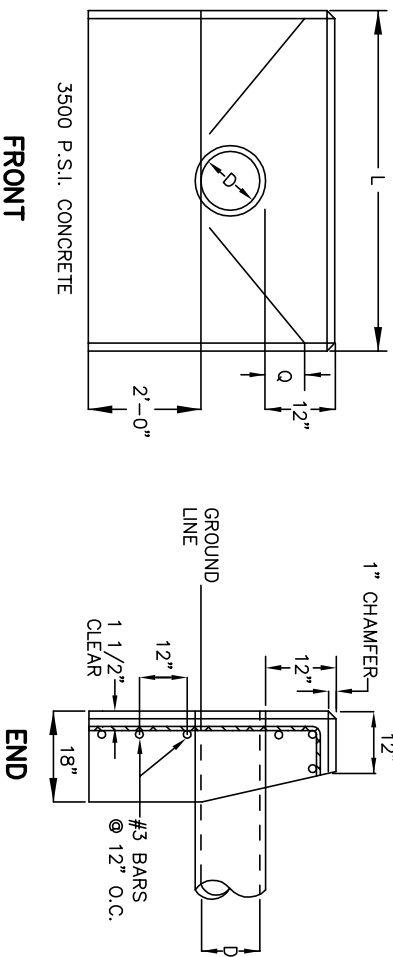
HEADWALL DIMENSIONS ¹.

DIA	A	B	C	D	E	F	G	H
12"	2'-6"	3'-6"	4'-6"	2'-6"	1'-6"	1'-6"	4'-3"	3'-0"
15"	2'-9"	3'-6"	4'-6"	2'-6"	1'-6"	1'-6"	4'-6"	3'-3"
18"	3'-0"	3'-9"	4'-9"	2'-9"	1'-6"	1'-9"	4'-9"	3'-6"
24"	3'-6"	4'-0"	5'-0"	3'-0"	1'-6"	2'-0"	5'-3"	4'-0"
36"	4'-6"	4'-3"	6'-0"	4'-0"	1'-8"	2'-3"	5'-11"	5'-0"

FOR PIPE DIAMETERS EXCEEDING 36"
 REFER TO MASSDOT DRAWING E 206 6 0
 MARCH 2012 AS MAY BE REVISED.

1. NOT INCLUDING MASONRY VENEER.

Town of Sharon Department of Public Works	DWN BY: JBR
	APPD BY: TCH
	DATE: MARCH 2014
SCHEDULE G	
HEADWALL WITH WINGWALL	DWG NO. HW-1



NOTE:

MASONRY VENEER REQUIRED ON ALL EXPOSED FACES UNLESS WAIVED BY THE PLANNING BOARD.

HEADWALL DIMENSIONS¹.

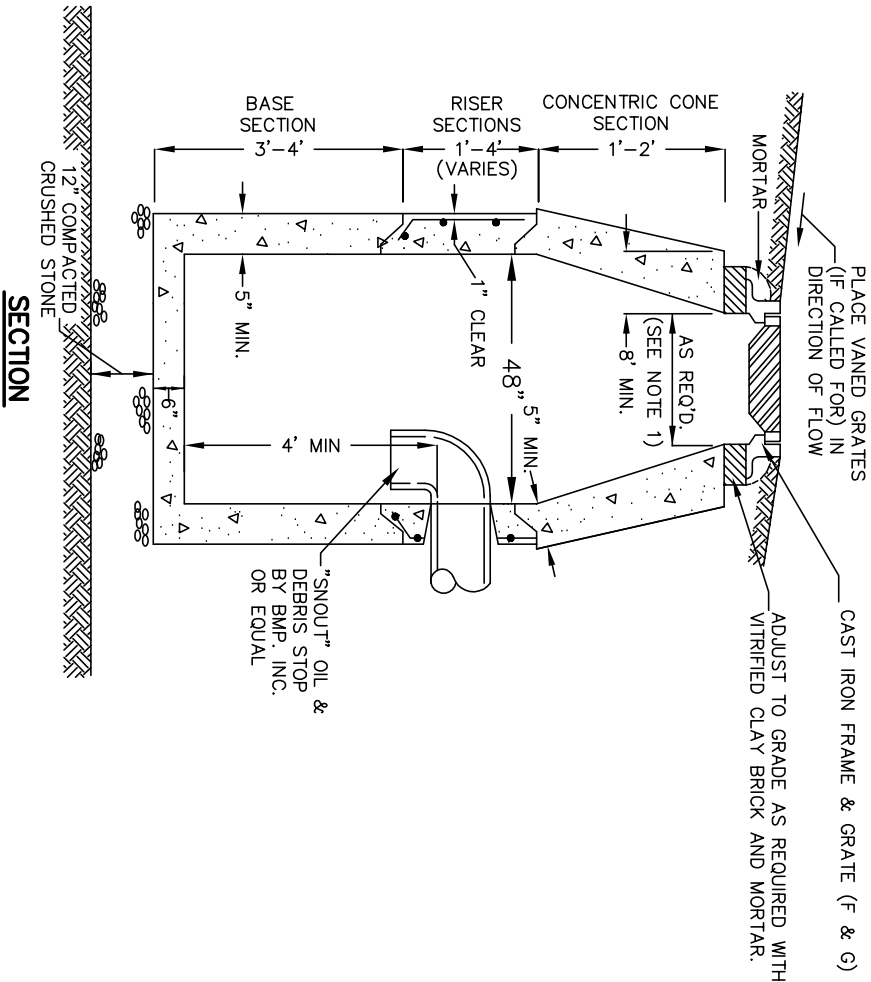
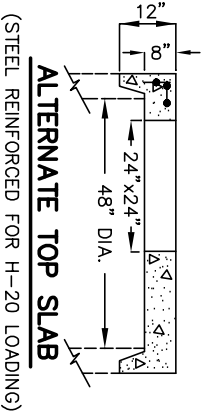
Q = 6" FOR 2:1 SLOPE					
DIA	12"	15"	18"	21"	24"
L	5'-6"	6'-6"	7'-6"	8'-8"	9'-3"
					10'-6"

1. NOT INCLUDING MASONRY VENEER.

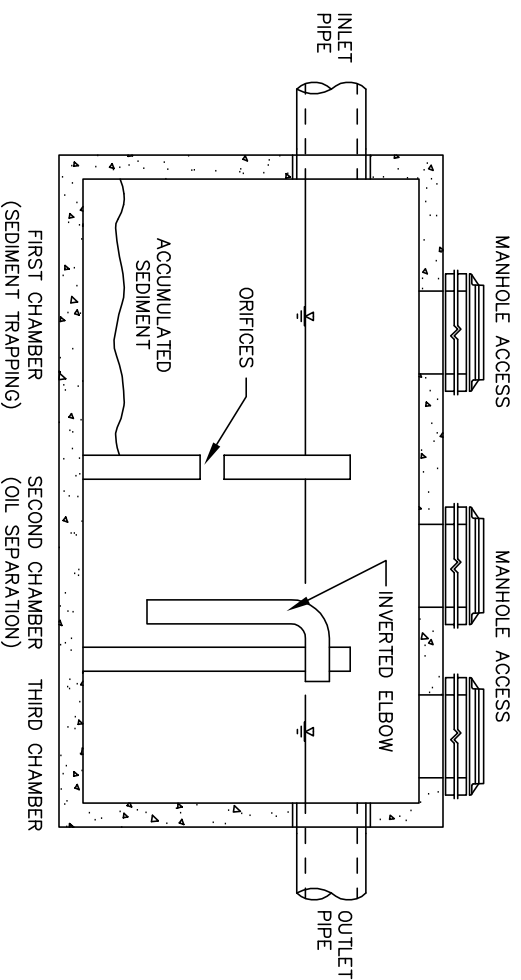
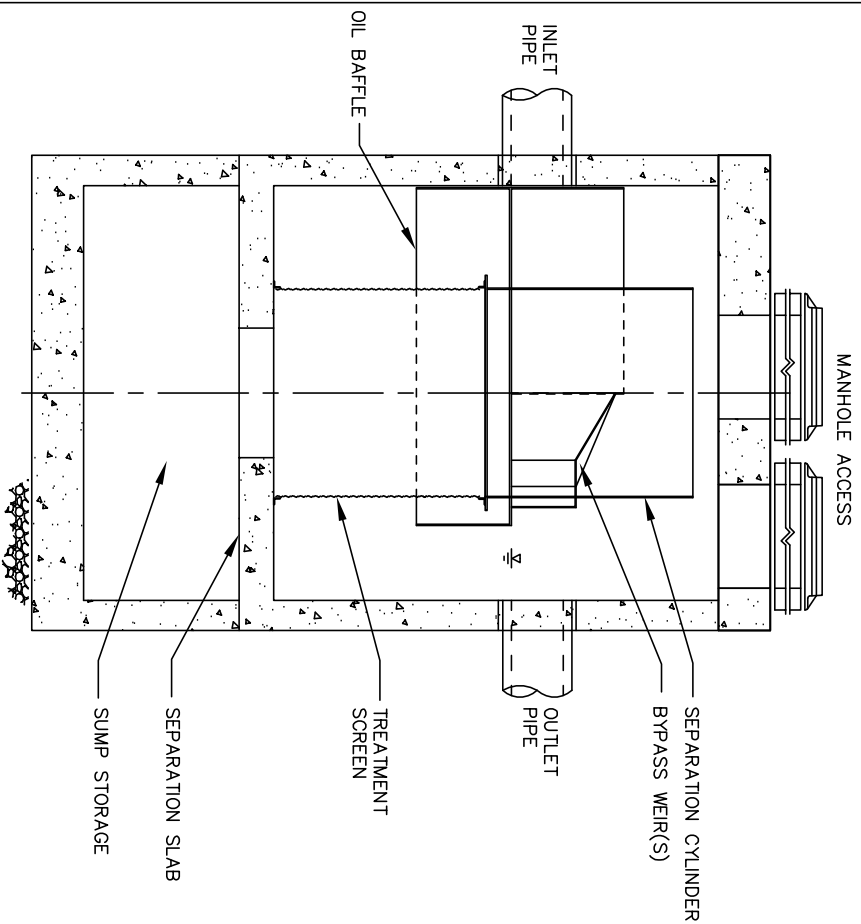
<p><i>Town of Sharon</i> <i>Department of Public Works</i></p>	DWN BY: JBR
	APPD BY: TCH
	DATE: MARCH 2014
<p>SCHEDULE H STRAIGHT HEADWALL</p>	DWG NO. HS-1

GENERAL NOTES:

1. PROVIDE 24"x24" OPENING AND LE BARON LF248-2 FRAME AND GRATE FOR SINGLE GRATE CATCH BASIN (CB). PROVIDE 24"x36" OPENING AND 2 LE BARON 3-FLANGE LK 120A FRAME AND GRATES FOR DOUBLE GRATE CATCH BASIN (CB-DBL).
2. LE BARON OR EQUAL PRODUCTS WILL BE PERMITTED BASED ON TOWN ENGINEER APPROVAL.
3. SET FRAME IN FULL BED OF MORTAR. BRICKS MAY BE USED FOR GRADE ADJUSTMENTS.
4. JOINT SHALL BE SEALED WITH MASTIC GASKET PER FED. SPEC SS-SS-210 AND AASHTO M-198.
5. PROVIDE "V" KNOCKOUTS FOR PIPES w/ 2" CLEARANCE TO OUTSIDE OF PIPE. MORTAR ALL PIPE CONNECTIONS.
6. REINFORCED STEEL CONFORMS TO LATEST ASTM SPEC. 0.12 SQ.IN./ LINEAR FT. AND 0.12 SQ.IN. (BOTH WAYS) BASE BOTTOM.
7. CONCRETE COMPRESSIVE STRENGTH-4000 PSI MIN.
8. MANHOLE DESIGN SPECS CONFORM TO LATEST ASTM C-478 SPEC FOR "PRECAST REINFORCED CONCRETE MANHOLE SECTIONS."



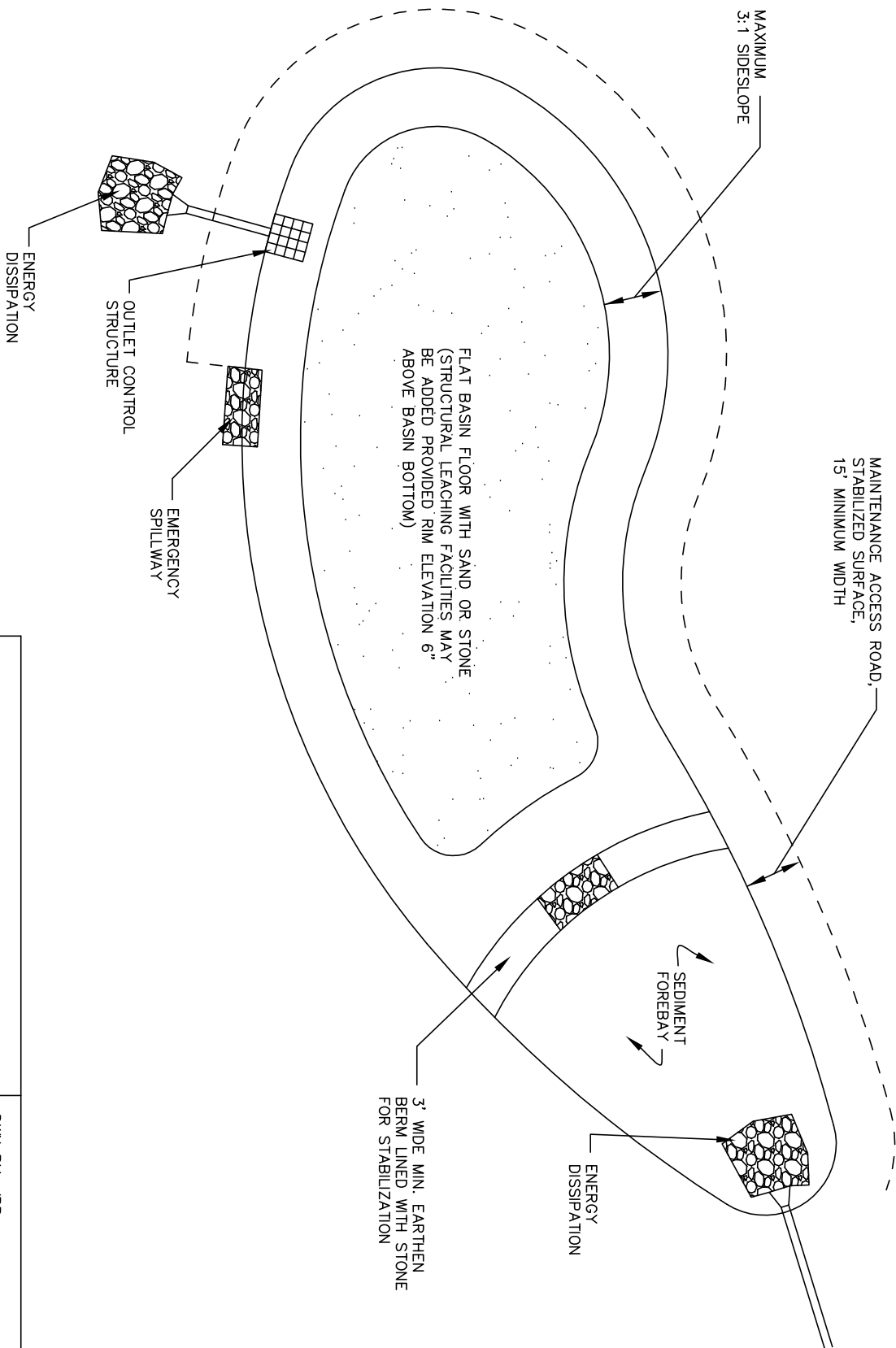
<i>Town of Sharon</i> <i>Department of Public Works</i>		DWN BY: JBR
SCHEDULE 1 CATCH BASIN		APPD BY: TCH
		DATE: MARCH 2014
		DWG NO. CB-1



NOTE:

OIL-WATER SEPARATORS SHALL BE DESIGNED BY A REGISTERED PROFESSIONAL ENGINEER AND SHALL COMPLY WITH ALL ASPECTS OF THE MASS DEP STORMWATER HANDBOOK.

<p><i>Town of Sharon</i> <i>Department of Public Works</i></p>	DWN BY: JBR
	APPD BY: TCH
	DATE: MARCH 2014
<p>SCHEDULE J SCHEMATIC OIL WATER SEPARATORS</p>	DWG NO. OWS-1



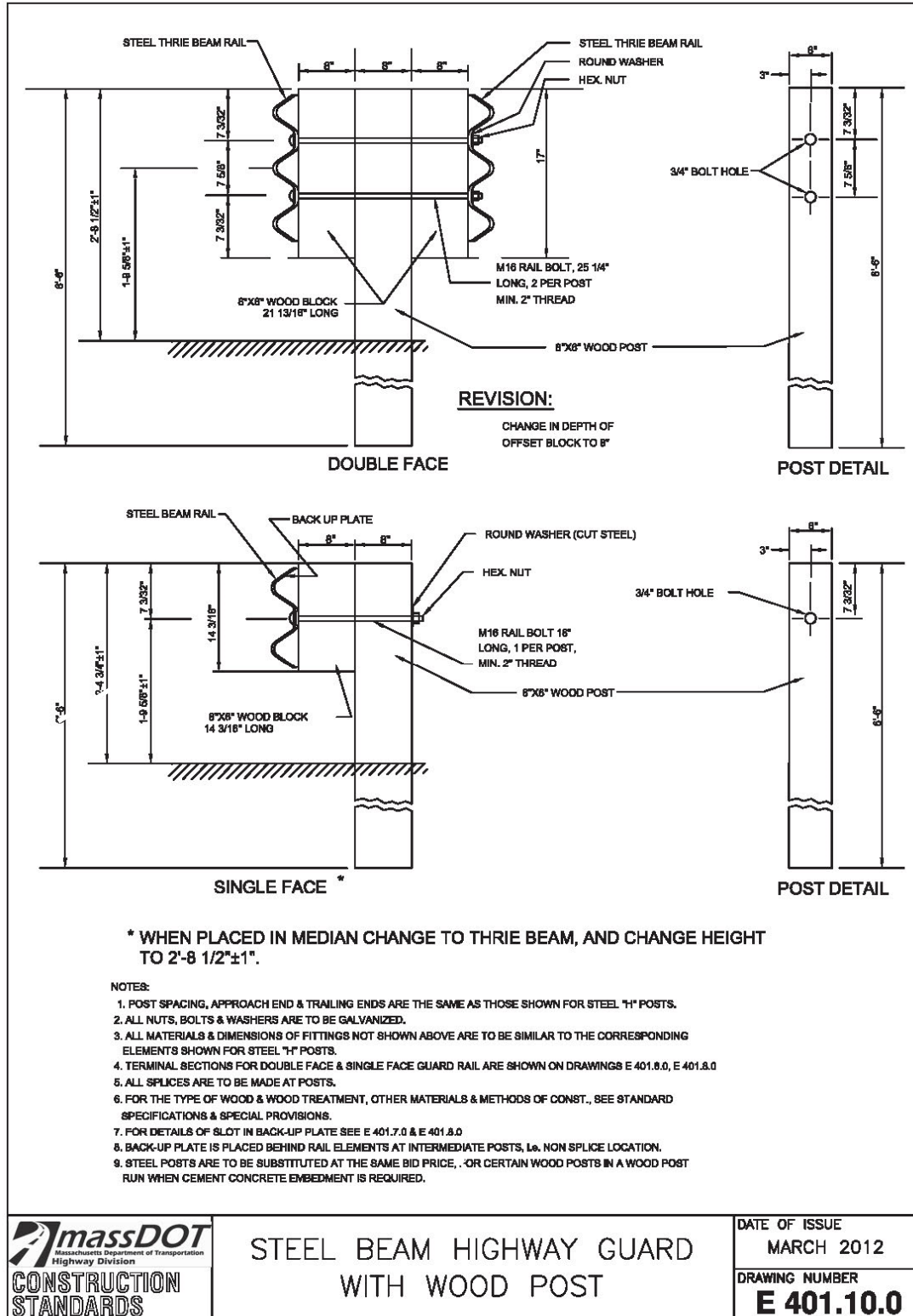
NOTE:

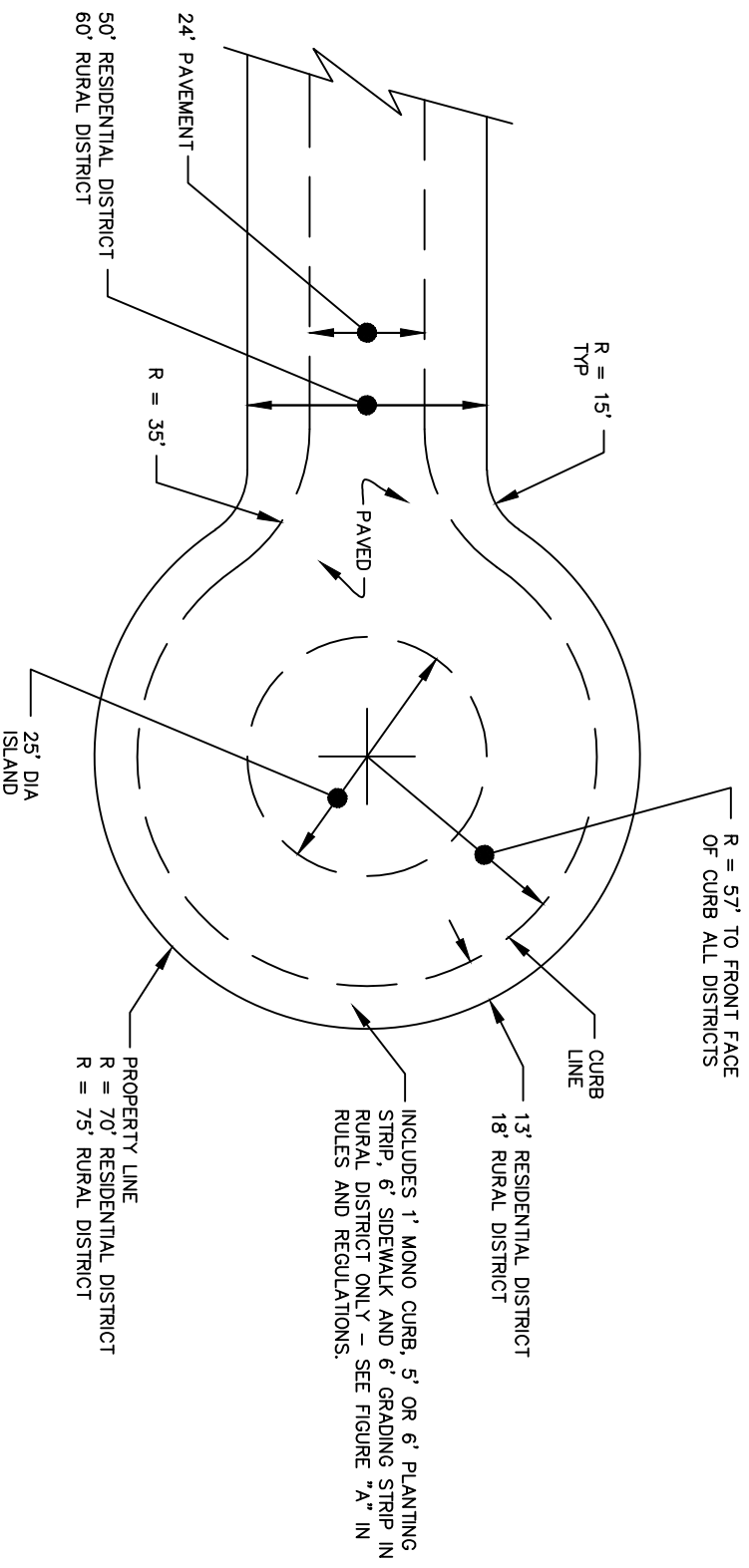
THE STORMWATER BASIN SHALL BE DESIGNED BY A PROFESSIONAL ENGINEER, AND SHALL COMPLY WITH ALL ASPECTS OF THE MASS DEP. STORMWATER HANDBOOK AND SECTION 4.5 OF THE PLANNING BOARD RULES AND REGULATIONS.

<p><i>Town of Sharon</i> <i>Department of Public Works</i></p>		DWN BY: JBR
<p>SCHEDULE K SCHEMATIC STORMWATER BASIN</p>		APPD BY: TCH
		DATE: MARCH 2014
		DWG NO. SWB-1

SCHEDULE L

STEEL BEAM GUARDRAIL WITH WOOD POST





<i>Town of Sharon</i> <i>Department of Public Works</i>		DWN BY: JBR
SCHEDULE M MINOR STREET CUL-DE-SAC DESIGN		APPD BY: TCH
		DATE: MARCH 2014
		DWG NO. DE-1